



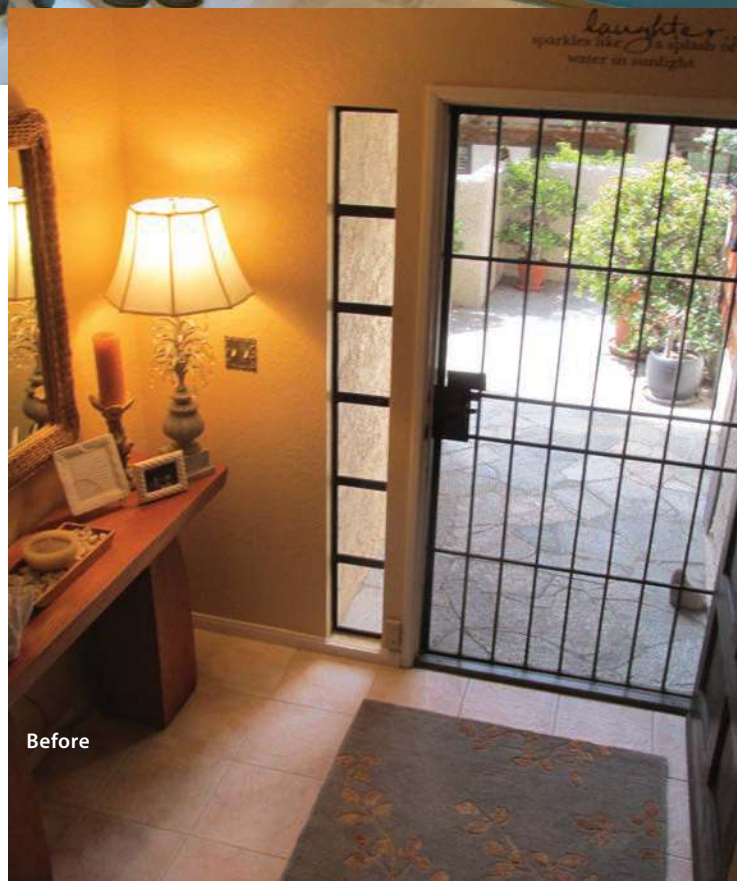
Let the Fun Shine In

PHOTOGRAPHY BY PREVIEWFIRST

The front door's deep aquamarine color hints that the interior of this tri-level townhome in Del Mar might loll in a sun-and-sand theme. Once inside the entry hallway, wall art pointing out the beach's location leaves no doubt.

Originally, the motto "Laughter sparkles like a splash of water in sunlight" was scrolled above the door that, at the time, was a dark wood and too heavy-hearted for the carefree sentiment. Perhaps the adage addressed high hopes for an atmosphere that didn't yet exist. Tatiana Machado-Rosas and her team at Jackson Design and Remodeling turned the wished-for ambiance into reality.

"We wanted to make this our dream beach house," homeowner Mary Dyer says of the plan she and her husband, Gary, had for the residence. "Our vision was to make it coastal contemporary. We wanted to pull nature in and enhance our views of the ocean and Torrey pines."



Before



Before

Above: Silver starfish playfully lead the way up the contemporary wood, glass and metal staircase that became a design statement.

Facing page: A fresh color palette, along with statement art and a casual bench, establishes the feeling of an inviting beach home.

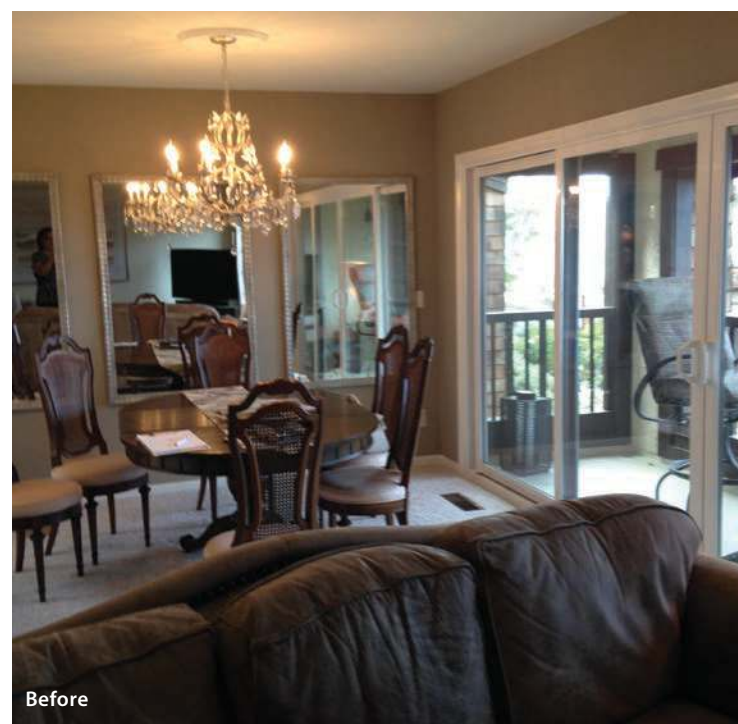


The new dining space shines with metallics and blues. The peninsula is roomy enough to accommodate a wine refrigerator, icemaker and liquor cabinet in addition to seating. Its waterfall edge emphasizes contemporary styling.

Beginning at the lower level (where two bedrooms and bathrooms reside that were not part of the major remodel), newly installed porcelain tile flooring works its way to the main level's living spaces — considerably lightening the home's dark and confining appearance. Its weathered, driftwood look enhances the surf-and-sand concept.

The stairs, too, received a breezier attitude when they switched from wrought iron railings to a more contemporary combination of wood, glass and metal. Silver-toned starfish, hanging on the stairway wall, lead the way to the new, airier living quarters.

"The homeowners were going for a very contemporary look with the feel of the beach, but not the typical, nautical red, white and blue," Tatiana says. "To that end, we incorporated soft blues and a little bit of coral as an accent on accessories in the



living spaces. Everything else is very neutral so that, on the whole, the home reflects a soft elegance."

Several structural changes were made for a more inviting layout, and some ceilings were raised to give the appearance of a more expansive space.

"Another major goal," Gary says of the main, second-story level, "was to open up the kitchen to the dining and family room area and expand the family room as much as possible within the existing footprint."

Removing a partial wall opened the space between the kitchen and the living and dining areas. It further allowed for a new kitchen layout. Two round columns, covered in a glass tile mosaic that reminds Mary of swimming fish, were added to support the ceiling.

Comfortable and soothing, the great room features furnishings that answer Mary

Larger and brighter, the updated living area features coral and aqua accents and a textured wave wall that propel the space into a coastal vibe.



Before

Above: Calm colors continue into the master suite's lounging area, a retreat with comfortable, twin leather recliners and a cozy fireplace.

Facing page: Like an exclusive hotel suite, the master bedroom and bath lure the homeowners with luxurious textures, lush carpeting, a soothing color palette, and an open and welcoming layout.

and Gary's call for a residence that could accommodate three couples and three grandchildren when friends and family visit.

"The idea was to get as much seating as possible," Tatiana says. "A sectional placed against the stairs made the most sense, because it was the best way to get more seating in a limited amount of space. Swivel chairs can face either the sectional or the fireplace and television or the bar and the dining room, depending on where the action is. And an expandable dining table provides flexibility."

To make space for a long peninsula that separates the kitchen from the dining room and to grow the kitchen to three times its original size, space was borrowed from a powder room, a wet bar and a dark breakfast nook at the kitchen's rear.

"The kitchen balances white upper cabinetry with glass doors and wood bottom cabinetry for a contemporary statement of warm minimalism," Tatiana says. "Sliding

doors in opaque glass conceal a generous new pantry, significantly upgrading storage capacity. Once the back room was integrated in the kitchen layout, there was even more room to expand, accommodating all new, high-end appliances."

"We also moved the garage door to the back of the house. So now when you walk in from the back patio, you are in the kitchen," Mary says. "As you walk in, it gets prettier and prettier and opens up."

At the front end of the kitchen, the sink's new locale within the peninsula faces the dining room and a larger sliding glass door that opens to the front patio. That move changed the at-the-sink view from a wall to nature's greenery and the ocean beyond.

"We also brought the ocean in, to a certain degree, with quartzite that reminds us of the sea and seagulls," Gary says. "The quartzite was used on the fireplaces in the living area and in the master bedroom suite."



Before



Before

The spacious master suite takes up the third floor and includes a lounging area with a redesigned fireplace that creates a compelling centerpiece.

"The existing fireplace lacked the importance it needed for the size of the bedroom," Tatiana says. "We gave it more emphasis by running quartzite all the way across the wall, which added depth.

"We created a very neutral space so that, when the curtains are opened, the color comes in from the green hills, the Torrey pines and the ocean," she continues. "It's a soothing, resort-like retreat."

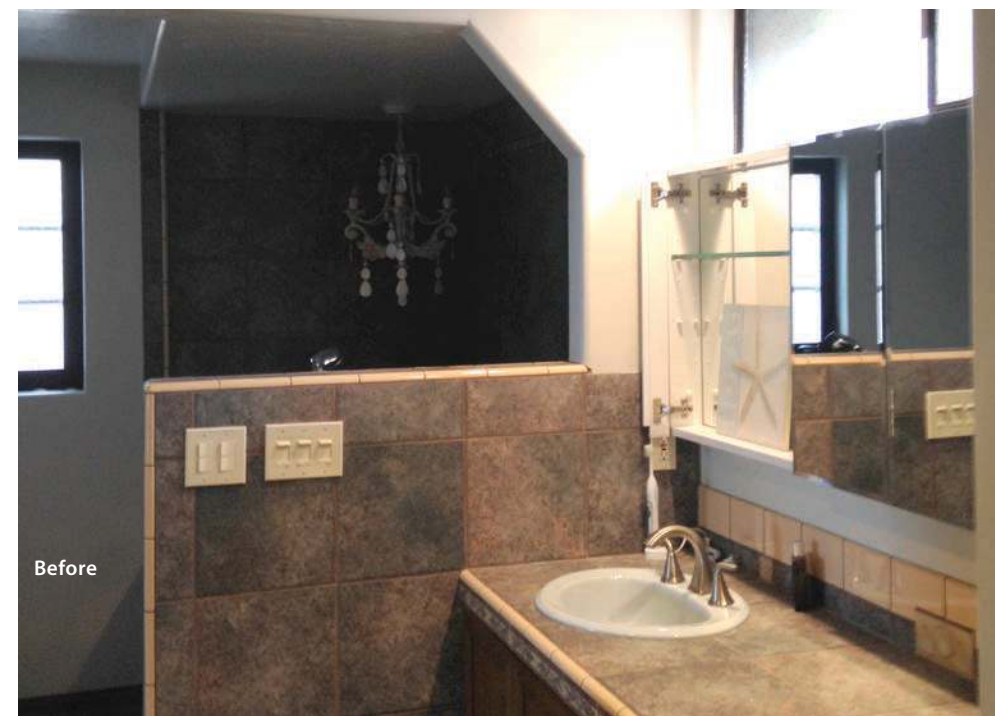
The master bathroom's new design incorporates a shower with tile reminiscent of a peaceful waterfall; a dressing room for

Mary; and, also for Mary, cabinetry knobs that have tiny, diamond-like gems that glitter from their center.

"I like a little bling," she admits. "So that was a bit of fun that Tatiana was great about."

Back downstairs, the three-dimensional, wave-like pattern of tile on a wall where the wet bar used to be brings one back to the interior's coastal theme.

"The home has the most amazing design," Mary says. "Neighbors knock on our door and ask if they can take pictures and if we mind if they do the same thing in their homes. At first you go, 'Uh,' and hesitate. But then you think, 'Why not share good ideas with people?'"



Before

Above: Removing a little-used tub and raising the ceiling created more space in the master bathroom. A piece of the ceiling above the shower that could not be removed was integrated into the design. The windows and vanity also could not be moved, so a pony wall behind the vanity allows for medicine cabinets with innovative, adjustable-height mirrors.

Facing page: By integrating the back room into the kitchen layout, the cook's space grew three-fold, accommodating high-end appliances and a generous pantry behind opaque-glass sliding doors. Light-filled, the kitchen connects naturally to the outdoors.