

COLORFUL *HERITAGE*

Dressed in bold tile and earthy finishes, a new master bath pays homage to its Spanish Colonial roots.



WRITER *Judith Turner-Yamamoto*
PHOTOS *Ed Gohlich*
FIELD EDITOR *Karen Reinecke*

Flush with Mediterranean-inspired colors and patterns, this expansive, light-filled bath retreat honors the Spanish Colonial character of its home while adding rustic and modern elements to the mix.



THIS PHOTO: Reclaimed Douglas fir shelves were cut to fit and clear-coated for a rustic feel. A neutral-pattern porcelain tile backdrop builds texture and adds subtle visual interest to this corner.



“THERE’S NO SUCH THING AS TOO MUCH TILE,” SAYS REGAN MEDEIROS-WIESE,

referencing the colorful hand-painted designs that play a prominent role in the new master bath she shares with husband Andy Wiese in their 1930s Spanish Colonial in San Diego. “I love walking into a place in Mexico—where my family had a home for decades—or in Spain or Italy, and the whole floor is colorful tile. Tile speaks to my Portuguese heritage, brings me peace and connection, and just says home.”

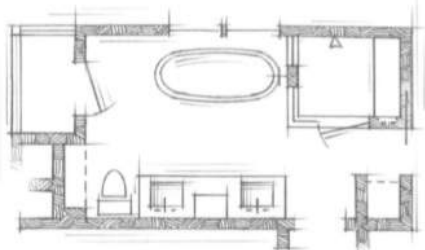
Senior interior designer Marisela Contreras of Jackson Design & Remodeling brought Regan and Andy’s vision of a rustic and restful retreat to life with a bath design that honors their home’s Mediterranean heritage while introducing modern elements for a balanced look. With vibrant tiles setting the mood, it was essential to select strong pieces that could complement the colorful designs without competing. A handsome ebony-stained double vanity and a French bateau claw-foot cast-iron tub—positioned to capitalize on the breathtaking ocean views—fill the bill. “There was no tub in the original master,” Contreras says. “They’re a busy family with two young children. A tranquil spot to unwind was essential.”

To beef up storage, Contreras designed a custom countertop-to-ceiling cabinet between the double sinks for everyday grooming items. An arched recessed niche nearby holds extra towels and bathing supplies.

“Our bath is so beautiful and so different,” Regan says. “The space just makes me feel transported. After everything is cleaned up and the kids are in bed, I can come upstairs to my own space and be surrounded by beautiful tile and look out at the view and decompress. It’s an amazing everyday ritual.”

Resources begin on page 108.

the plan



Making room for a freestanding soaking tub was a priority for these busy homeowners. The tub is situated below a pair of casement windows to take advantage of fresh air and views. The tub filler shares a wall with a roomy walk-in shower, complete with a built-in bench for grooming.



TOP: The flooring resembles terra-cotta but is actually concrete brick tiles. ABOVE: A love of exuberant patterns and the color blue guided the owners’ selection of handmade tiles. They chose quartz countertops, designed to resemble Calacatta Gold marble, for their elegance and low maintenance. The faucets are brushed nickel. The double mirrors boast an antique brass finish.

DESIGNER INSIGHTS: A PERSONALIZED RETREAT

Interior designer Marisela Contreras spotlights the small touches and big decisions that make a bath feel uniquely you.

- *Let your design speak volumes.* Sometimes too much is just enough. Colorful, exuberant tile, embellished fixtures, and sparkling chandeliers exude personality and give the space a custom look.
- *Add warmth through texture.* Layers of textured accessories—woven baskets, reclaimed-wood elements, and brushed-metal surfaces—introduce a cozy, tactile quality that welcomes.
- *Minimize the maintenance.* “You want to spend your time enjoying the space, not cleaning it,” Contreras says. She favors matte hardware, lacquered surfaces, easy-care quartz countertops, and durable tile for a fuss-free aesthetic designed to last.



“
OUR BATH IS SO
BEAUTIFUL AND
SO DIFFERENT.
THE SPACE JUST
MAKES ME FEEL
TRANSPORTED.
”

—REGAN MEDEIROS-WIESE,
HOMEOWNER

LEFT: The soaking tub—which weighs a whopping 350 pounds—features a hand-burnished natural iron and lacquered exterior finish, which is as simple to clean and maintain as it is dramatic. The embellished claw feet are finished in polished nickel to match the room’s other fixtures. ABOVE: A brushed nickel finish on the vintage-inspired wall-mount tub filler conveys the welcome patina of age.

THIS PHOTO: The shower's tile inlay is trimmed with a golden honey onyx molding and outlined with a mini mosaic in teals and blues. A decorative linear shower drain and built-in bench bring additional luxury to the walk-in shower.

